

Stylish, chic hairdressing - With few, simple hand grips.

Important: Make sure to tuck in your hair ends evenly and then roll the curlers into the hair, starting from the ends and rolling towards the roots.



1

The "Original Thermo Dream Curlers" are useable on dry hair only. Comb your hair thoroughly and spray lightly **Deluxe Cashmere Hair End Wonder** onto the hair.



3

Use the end of the wooden handle to separate single hair strands. They should not be wider than the curler itself.



4



The unique advantage is: Simply pulling out the handle.



5

After you have installed all the curlers, spray a little amount of **Deluxe Amber Dream Curler Spray**. Then apply heat with a hair dryer for approx. 3 minutes.



6

Let the Thermo Curlers cool off, then take a hold of each end of the curler using your middle finger and thumb, and then release from your hair. Start with the curlers in your neck area and work your way up.



7

- Enjoy Your Dream Hair Style.

2

Insert the handle into the curler.



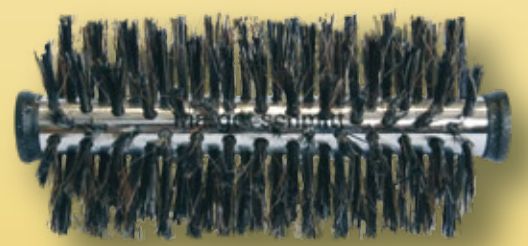
The final hair styling result of the new **Thermo Dream Curler** offers:

- 3 x more hold
- 3 x volume and body
- 3 x support for your hair style

Which Original Thermo Dream Curler for which hair length?



Small for short hair



Large for medium-length and long hair